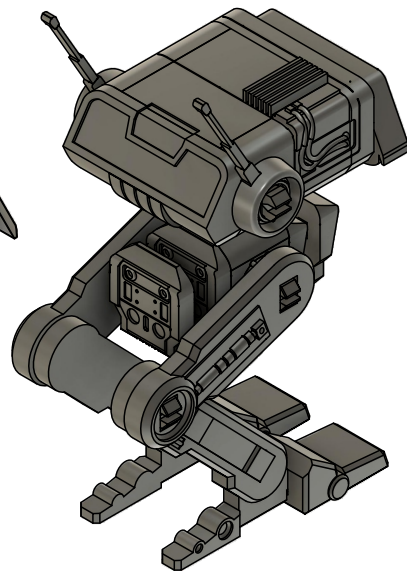
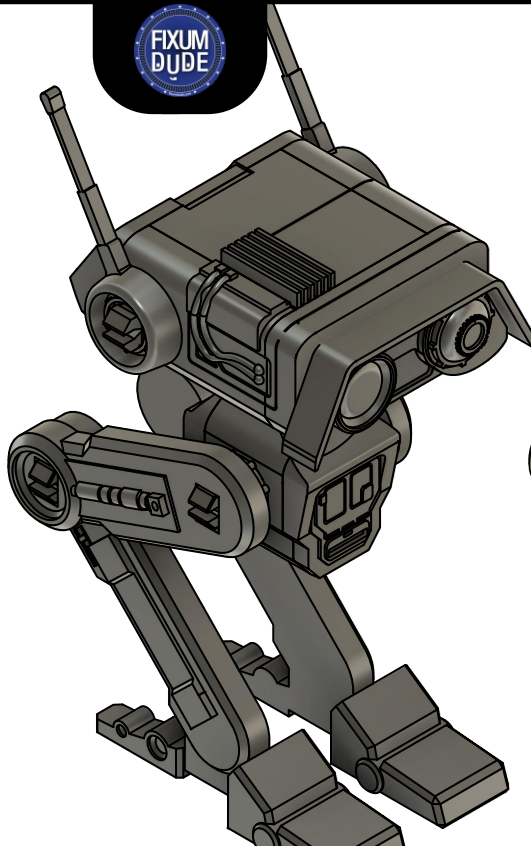
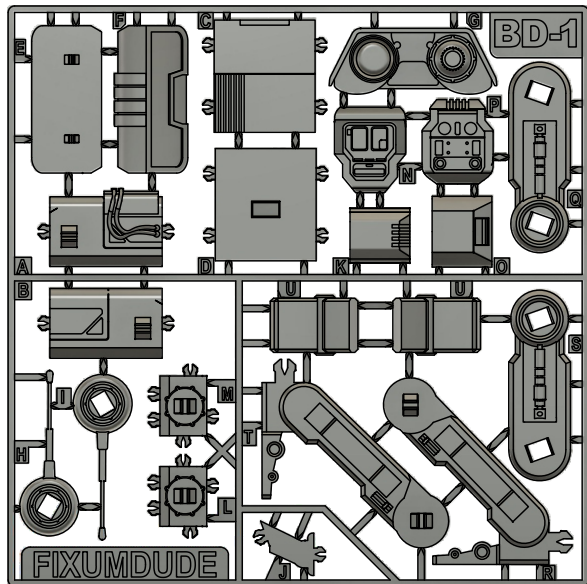


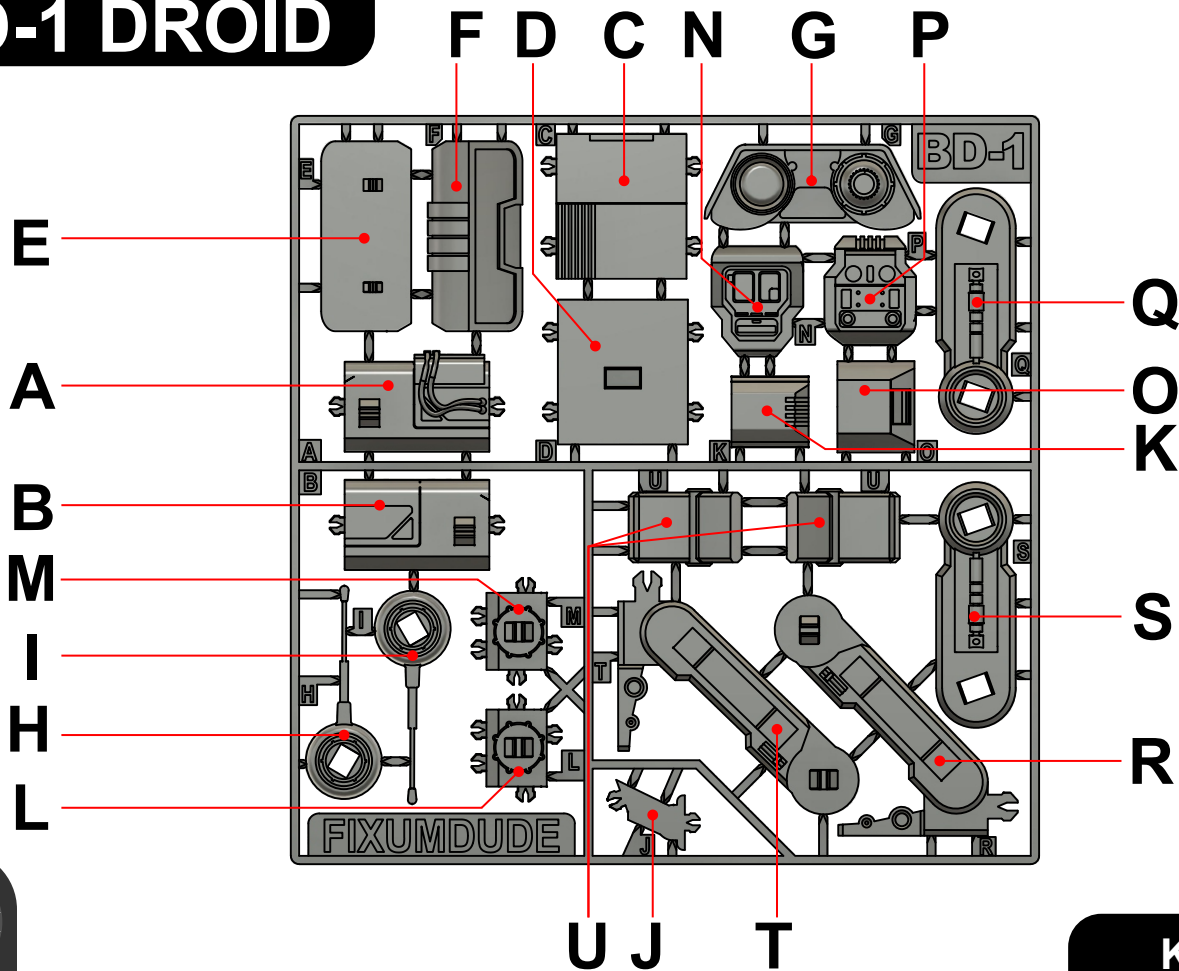
BD-1 DROID KIT CARD



ASSEMBLY INSTRUCTIONS

BD-1 DROID

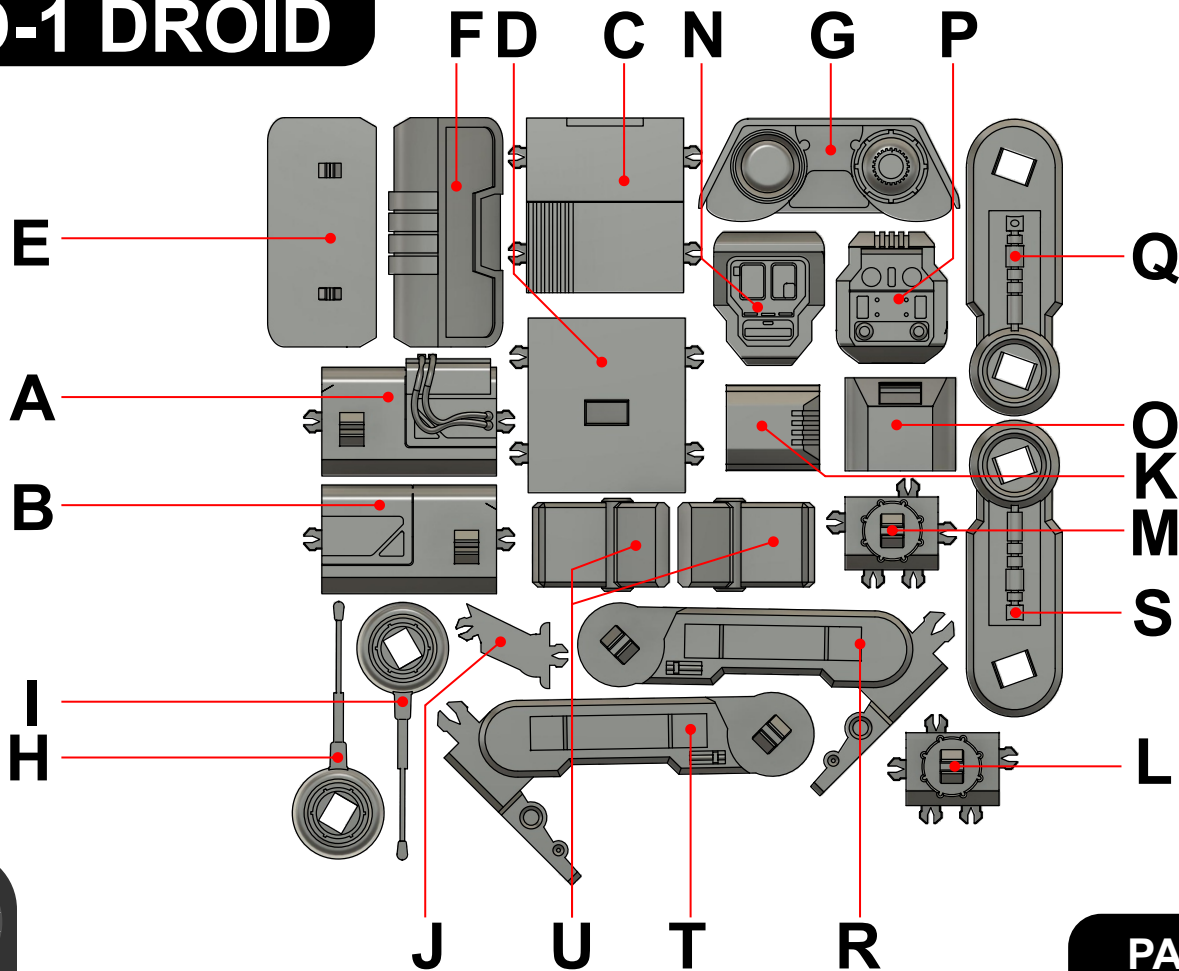
OVERVIEW



KIT CARD

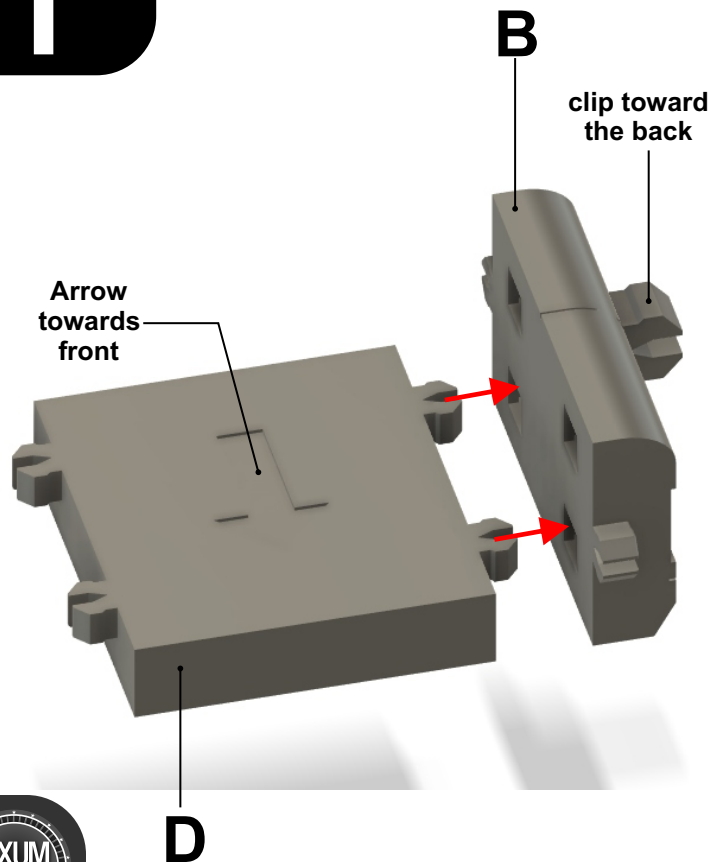
BD-1 DROID

OVERVIEW

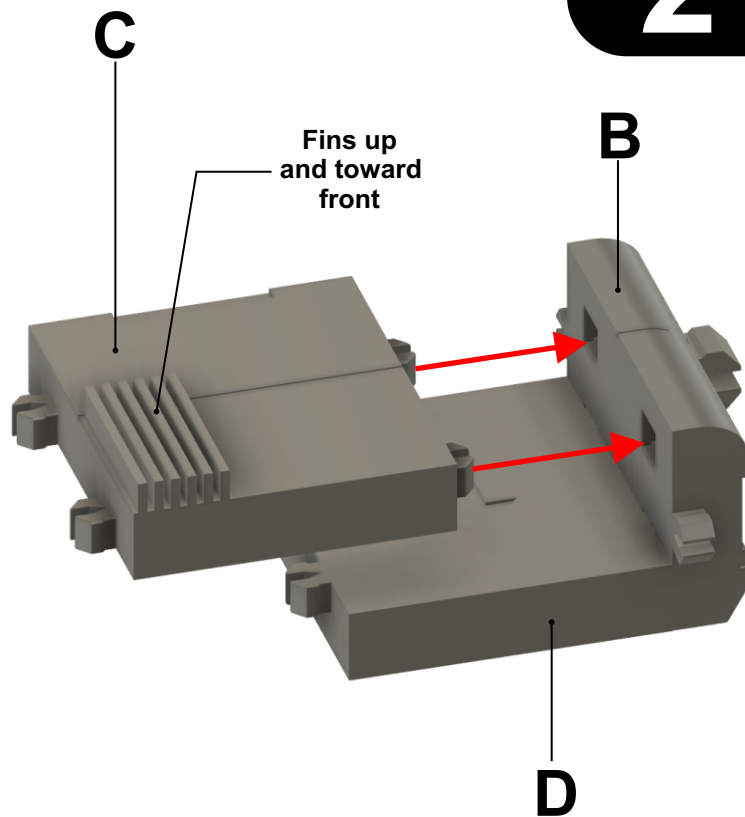


PARTS ONLY

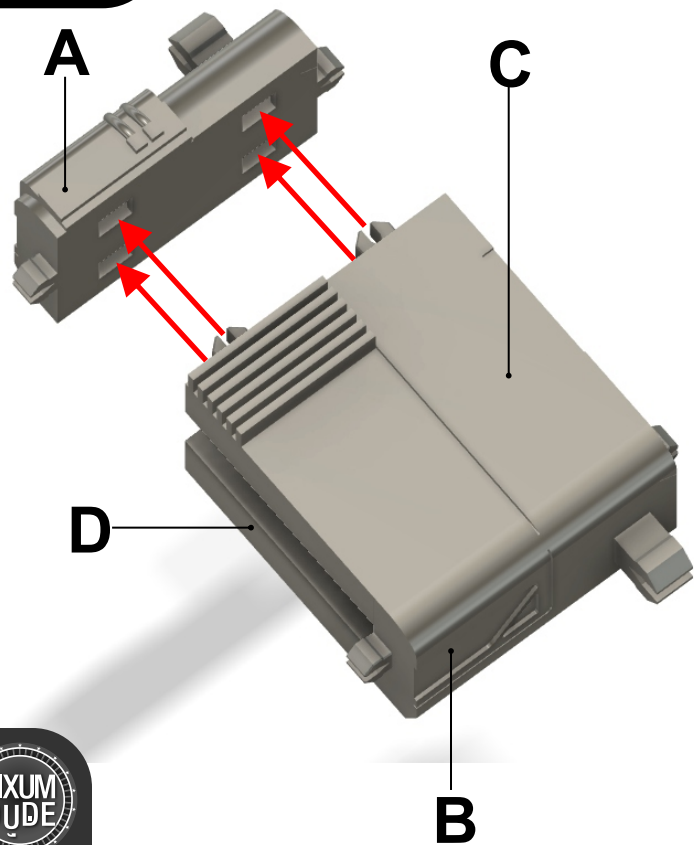
1



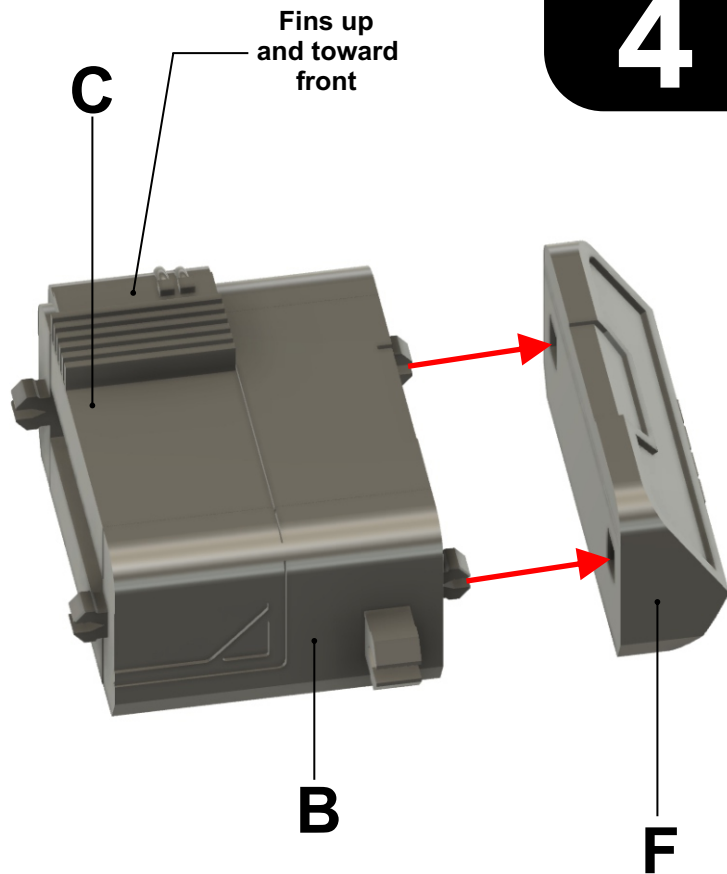
2



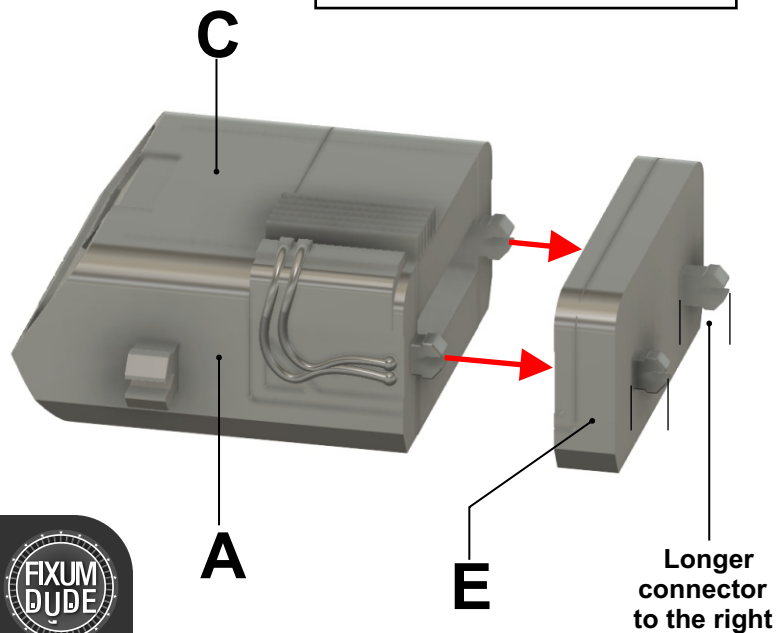
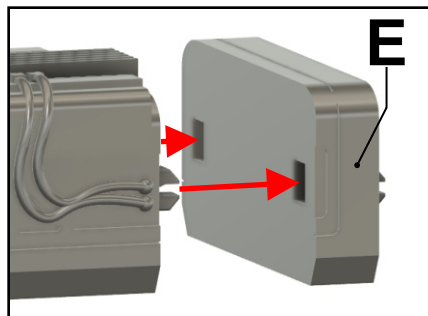
3



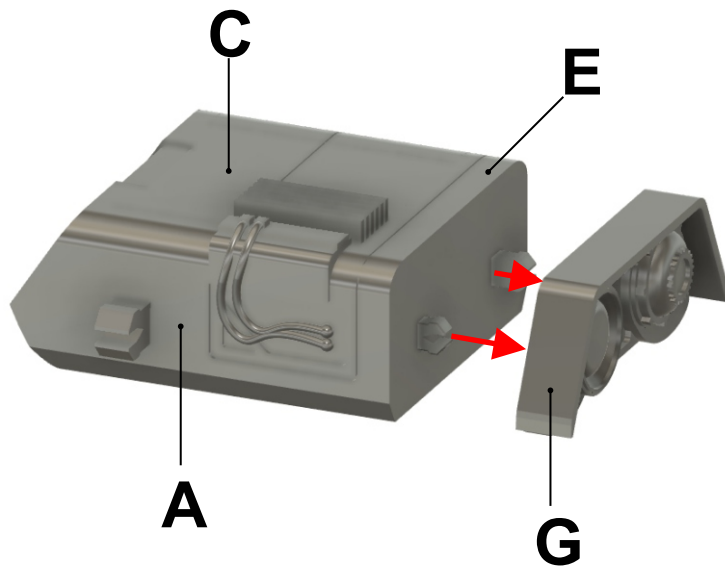
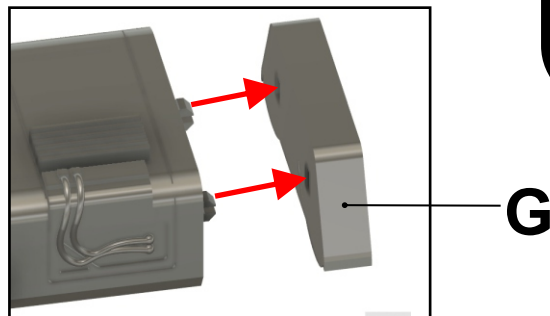
4



5

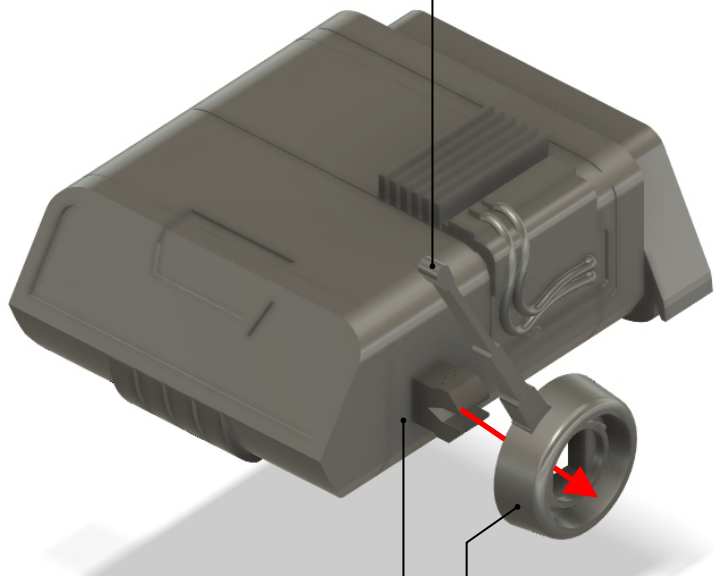


6



7

Antenna should face
up and toward the back
with the slot aligned
to clips

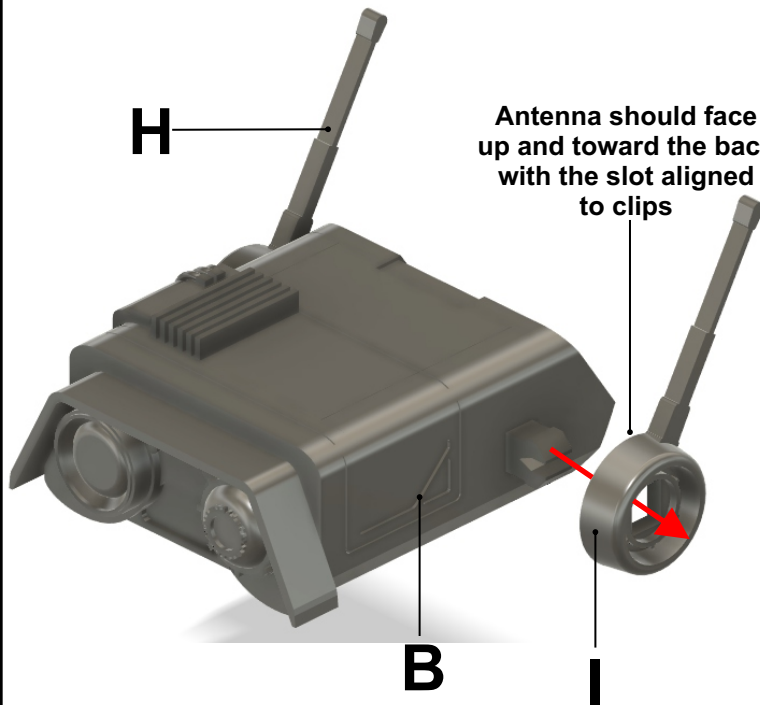


A H



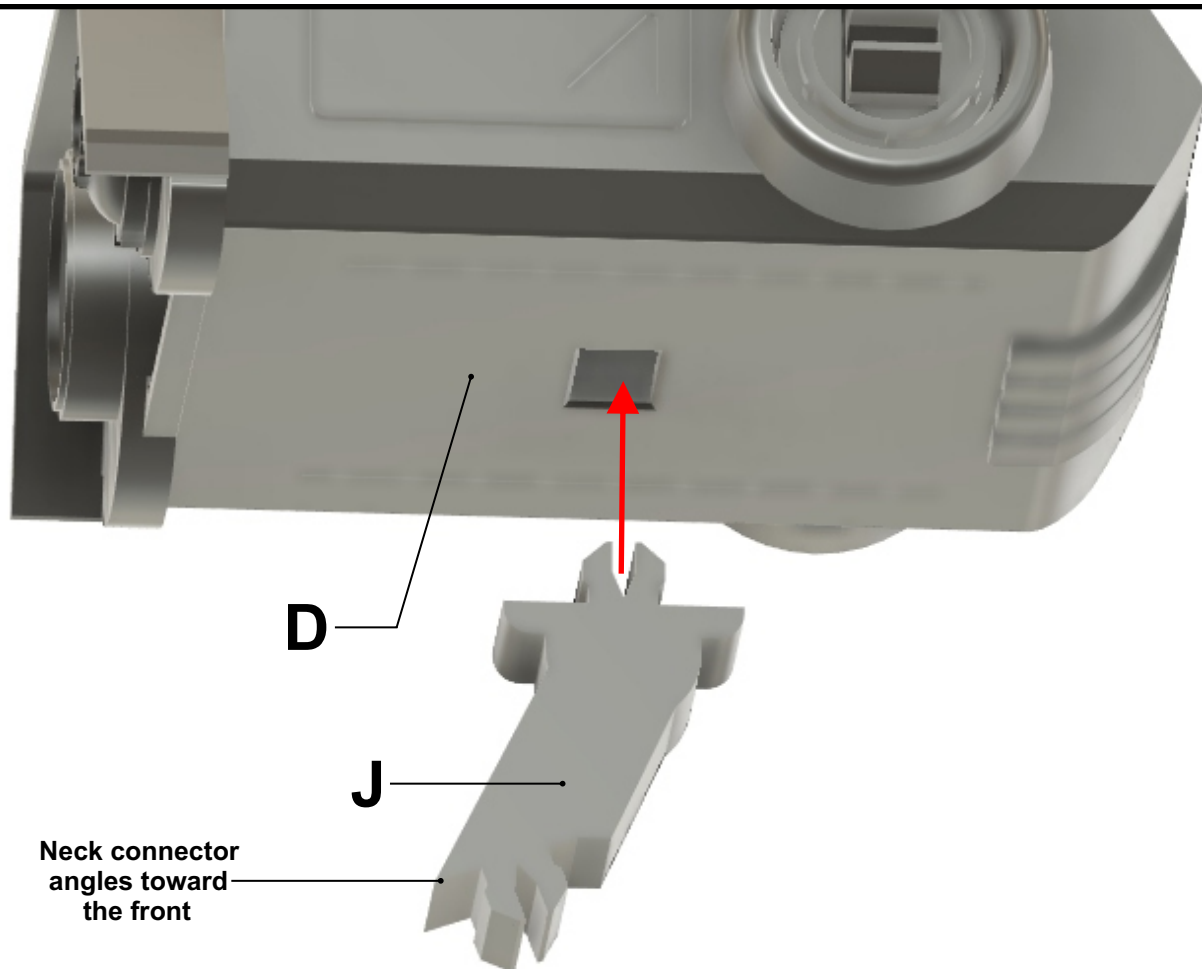
8

Antenna should face
up and toward the back
with the slot aligned
to clips



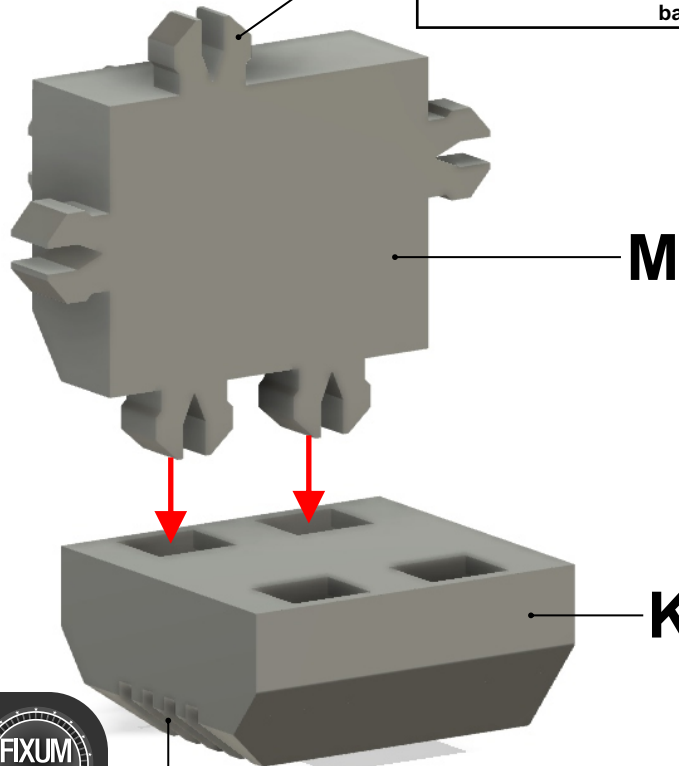
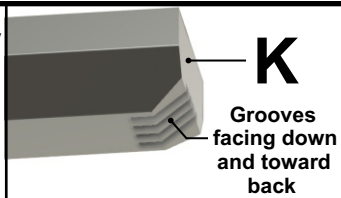
B

I



10

single connector
facing up and
toward back

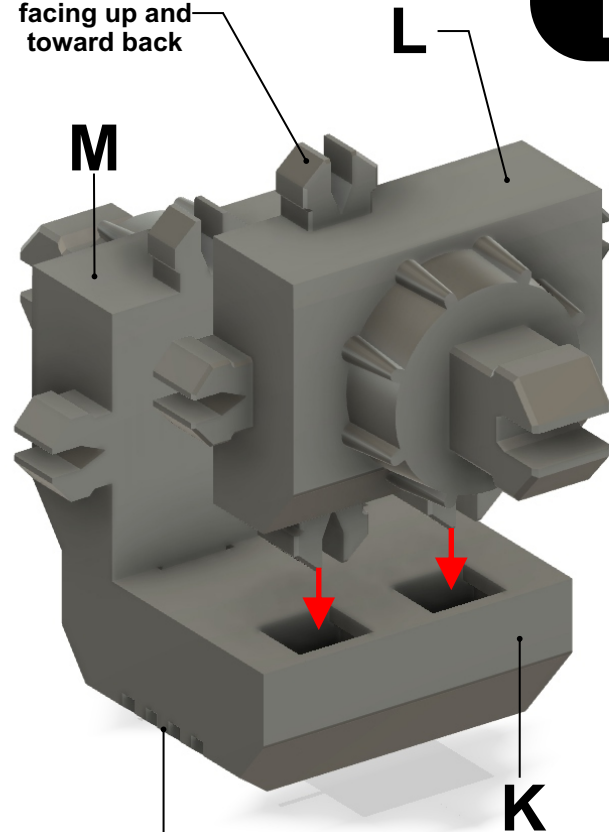


Note: Grooves at Back



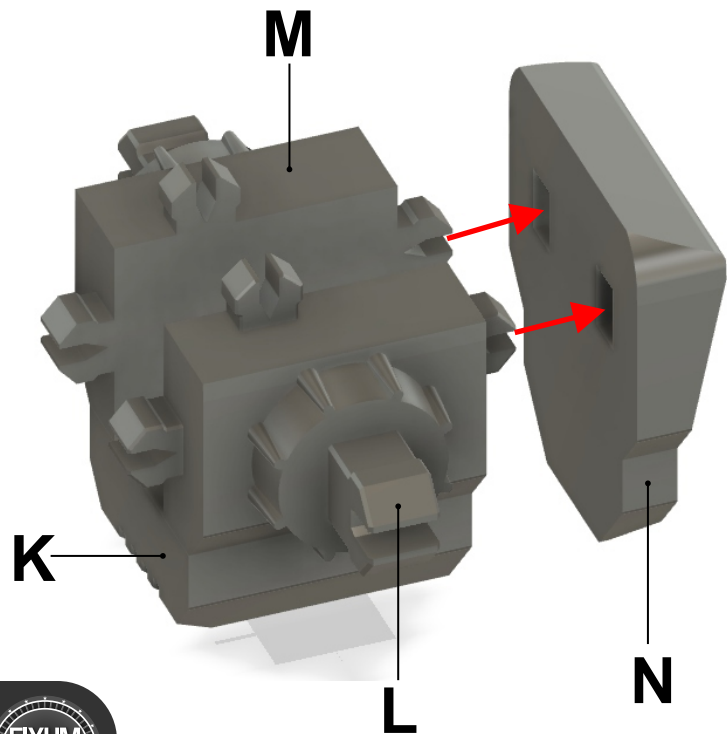
11

single connector
facing up and
toward back

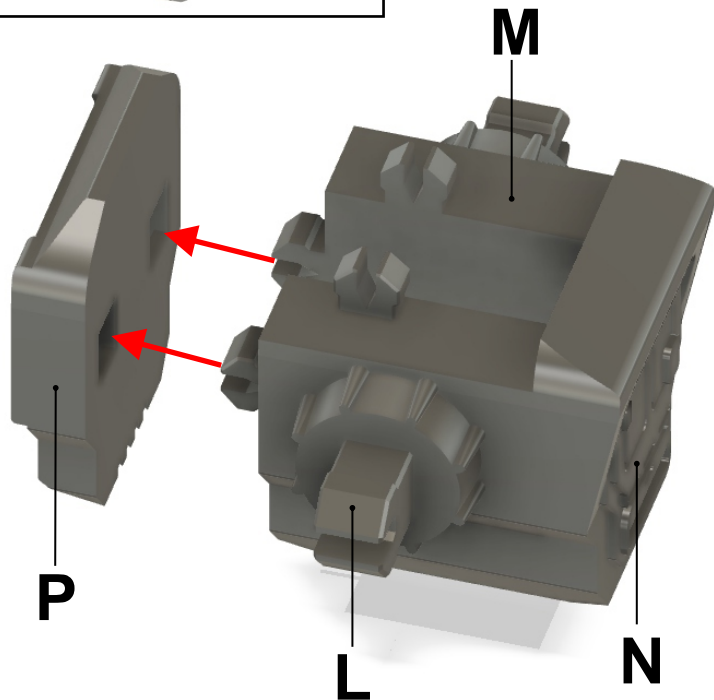
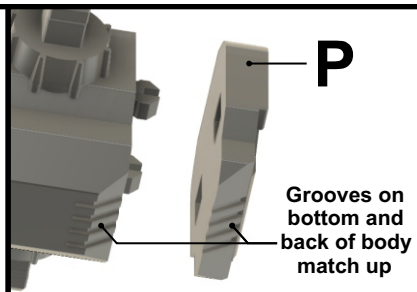


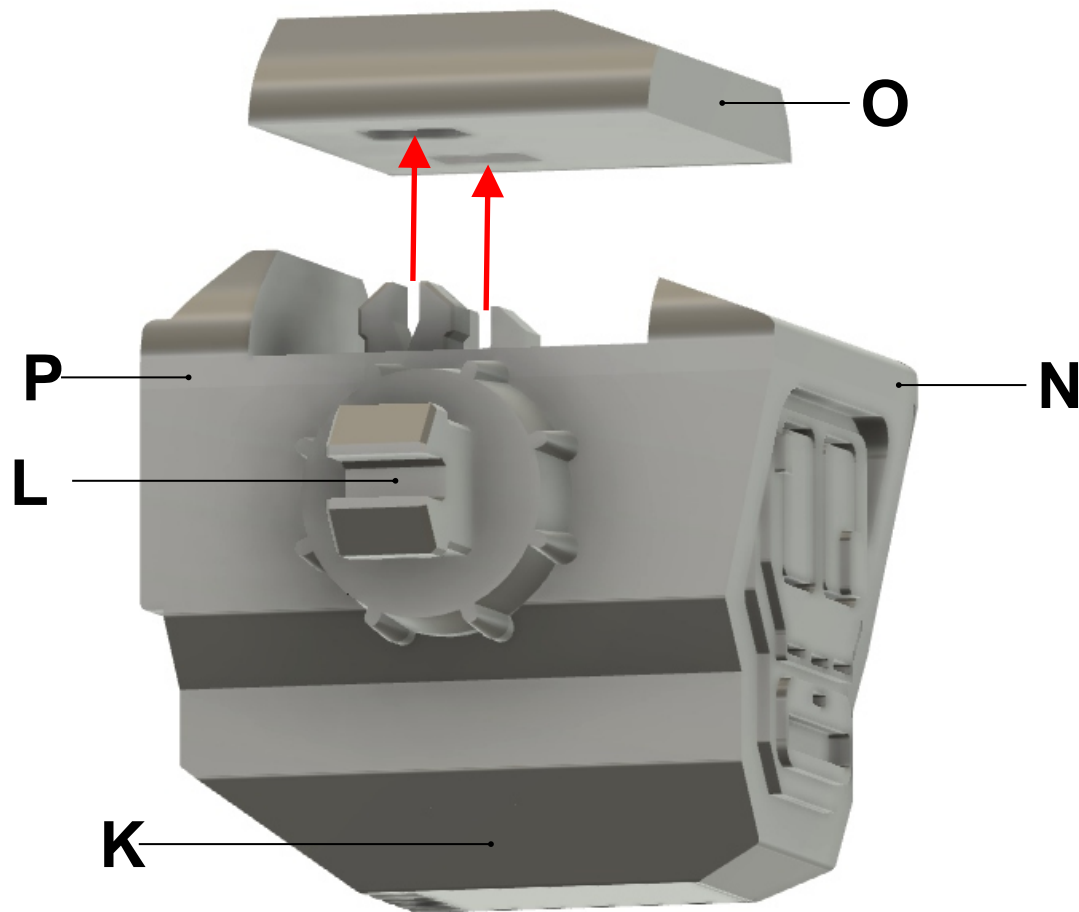
Note: Grooves at Back

12

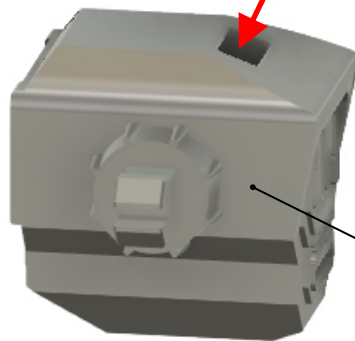
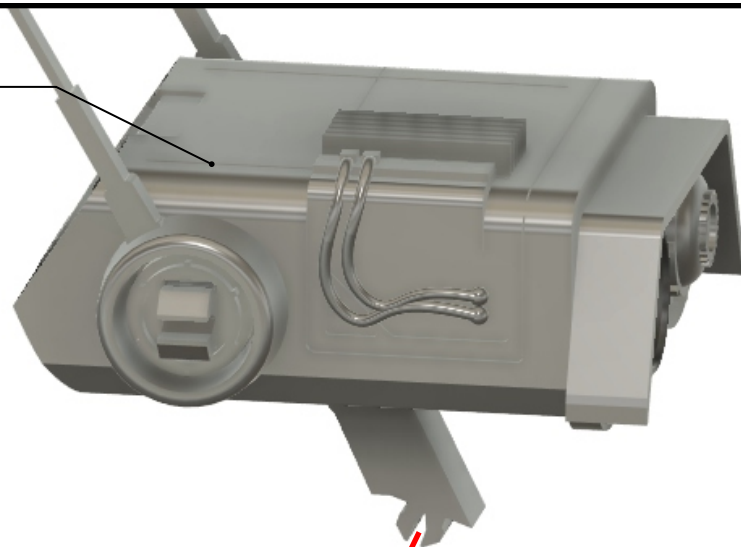


13





A,B,C,D,E,
F,G,H,I,J

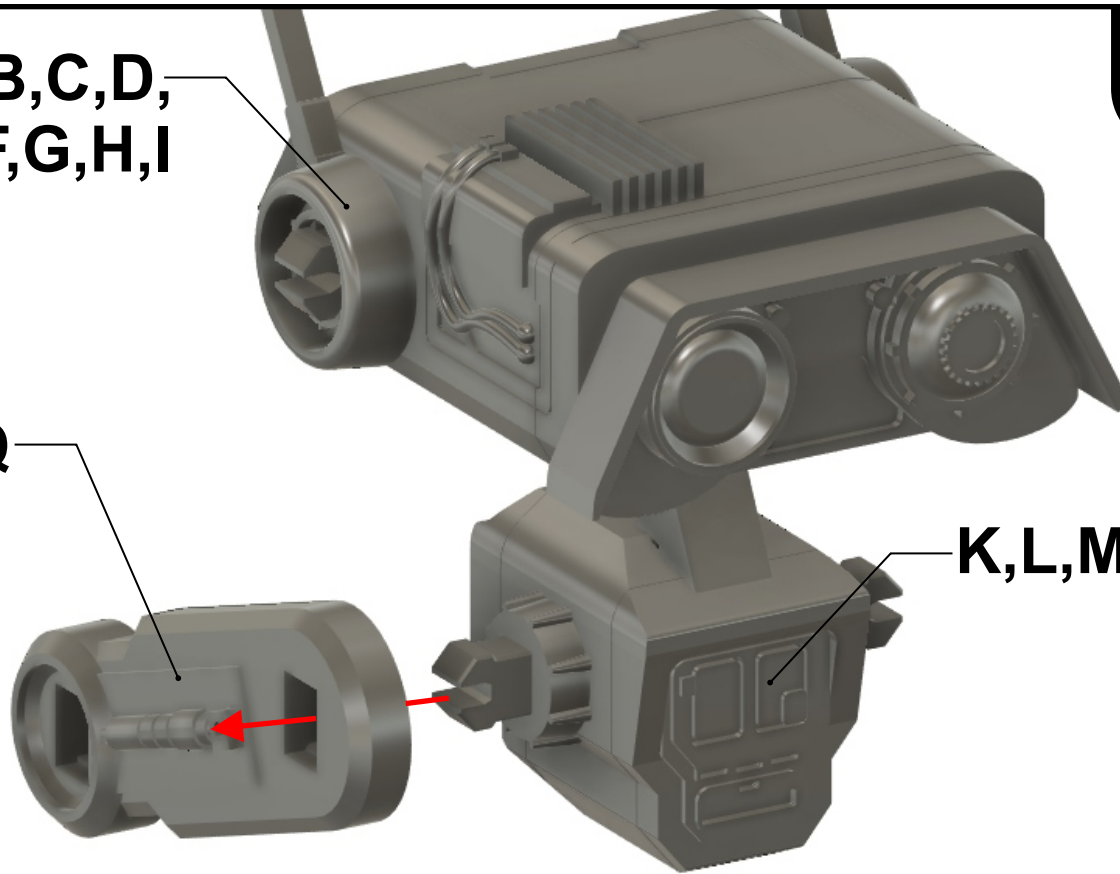


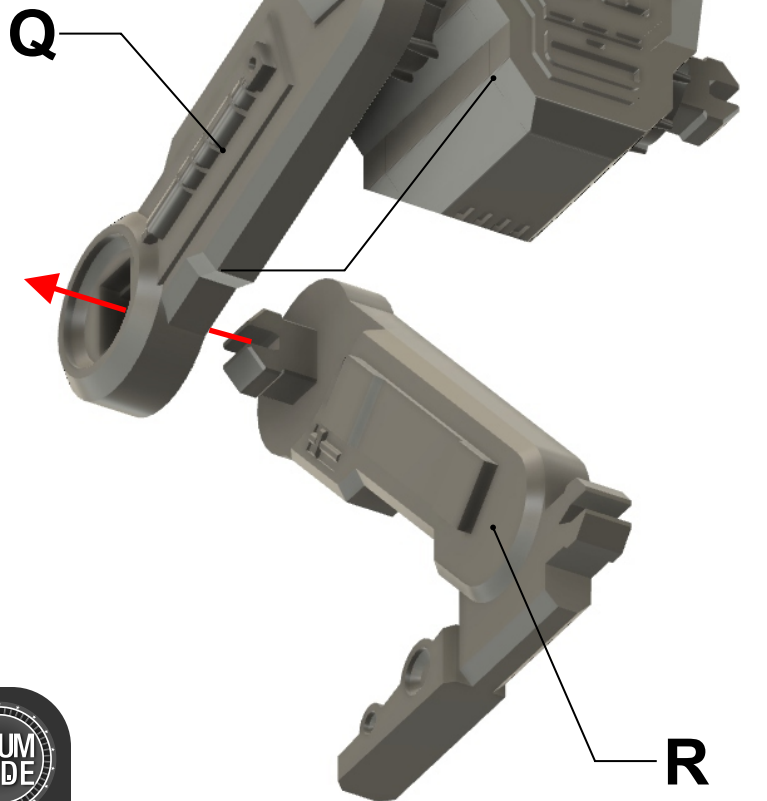
K,L,M,N,O

A,B,C,D,
E,F,G,H,I

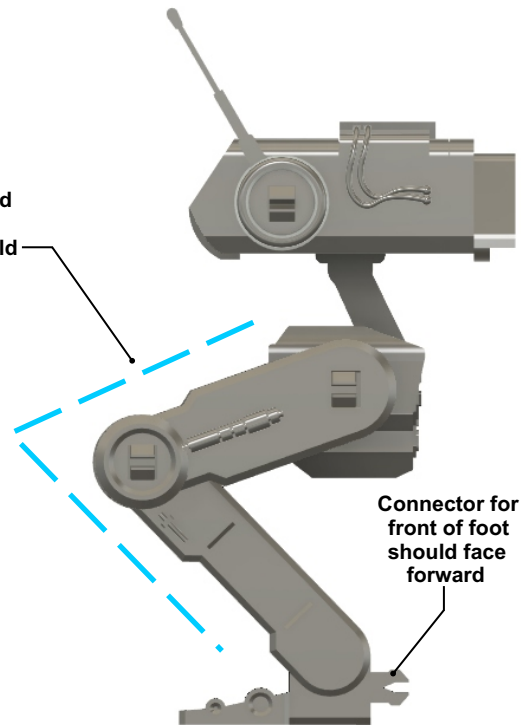
Q

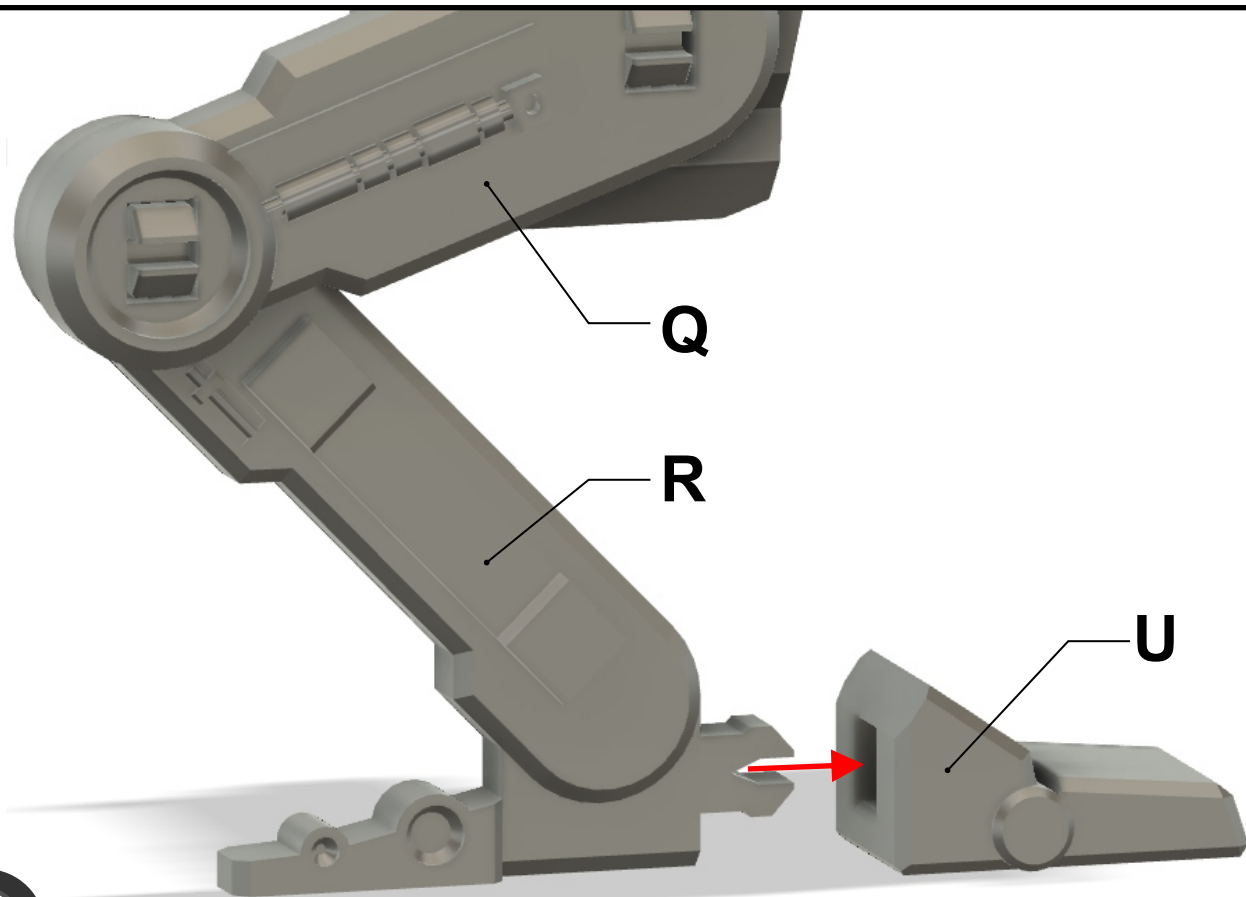
K,L,M,N,O

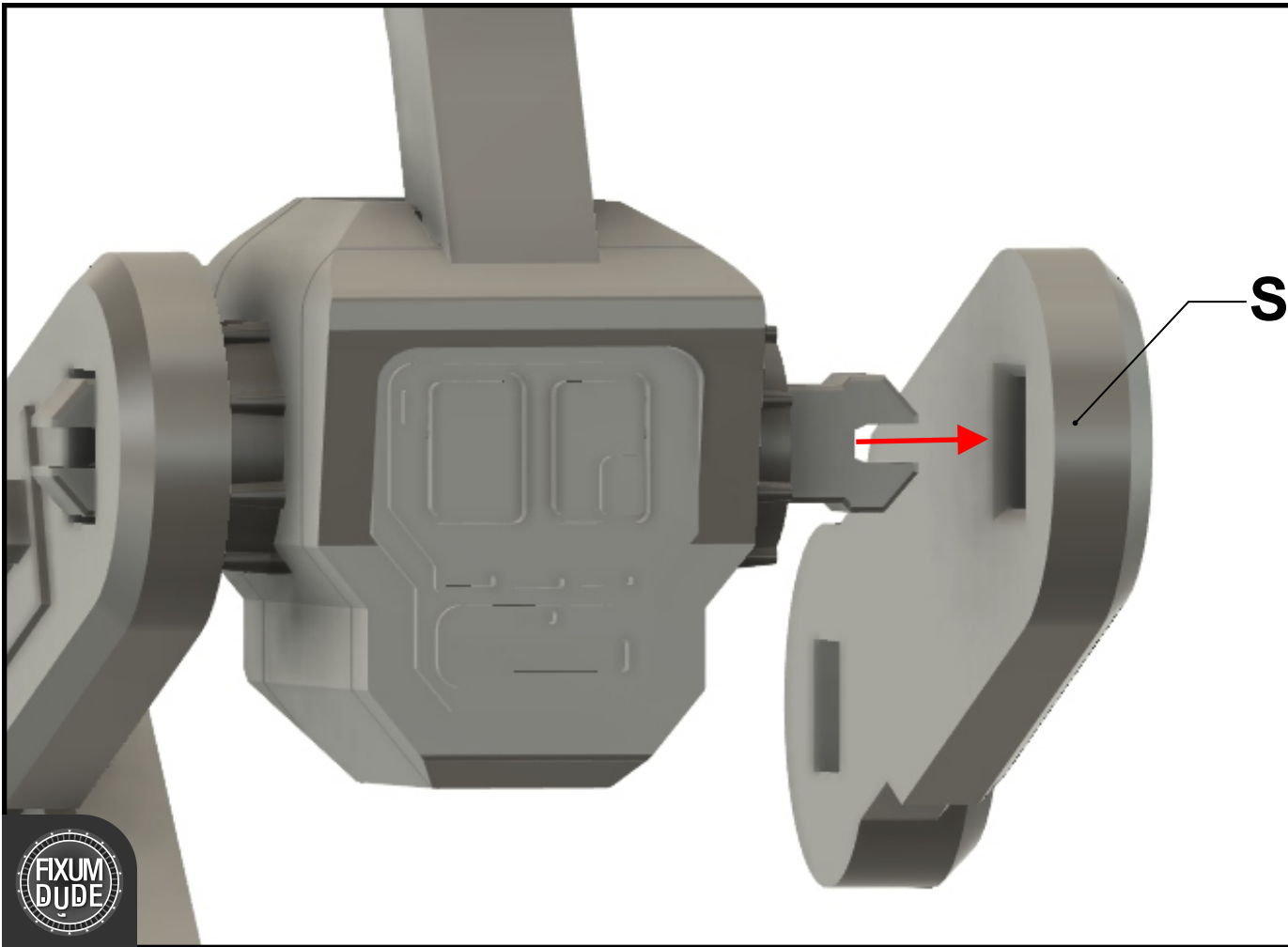




Top of leg should
angle back and
the bottom should
angle forward
as shown here







S

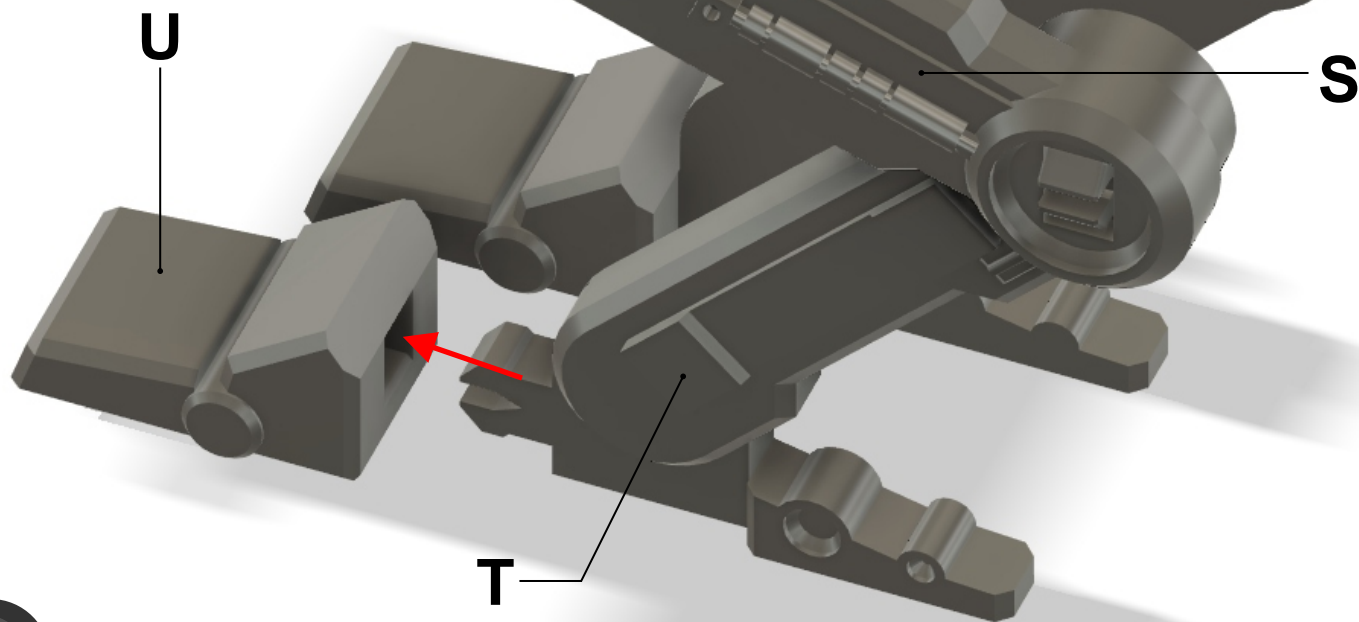
T

Top of leg should
angle back and
the bottom should
angle forward
as shown here

Connector for
front of foot
should face
forward



21



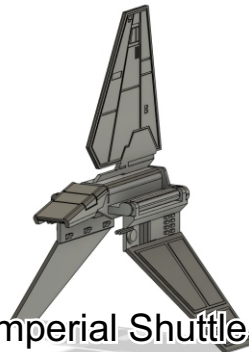
FINAL



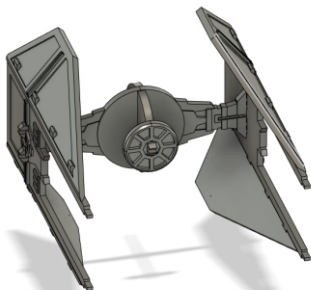
OTHER KIT CARDS AVAILABLE



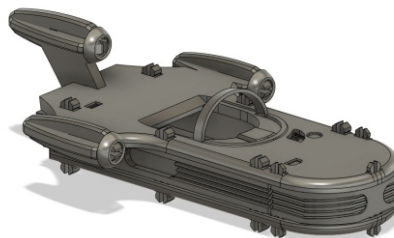
Millennium Falcon



Imperial Shuttle



Tie Interceptor



Landspeeder

FIXUMDUDE.COM